

WESTLAND IRRIGATION DISTRICT

**P.O. Box 944
Hermiston, OR 97838**

**Phone (541) 667-2030
Fax (541) 667-2031**

Westland Irrigation District is collaborating with Farmers Conservation Alliance and Umatilla County on a project to bolster water deliveries to over 200 patrons in the District's north end, while also providing all patrons the opportunity to add to their water supplies. The Ordnance Regional Water Supply and Aquifer Restoration Project (Ordnance Project) will increase water supply reliability for irrigated acres, while also providing a ready water source for economic and environmental benefits.

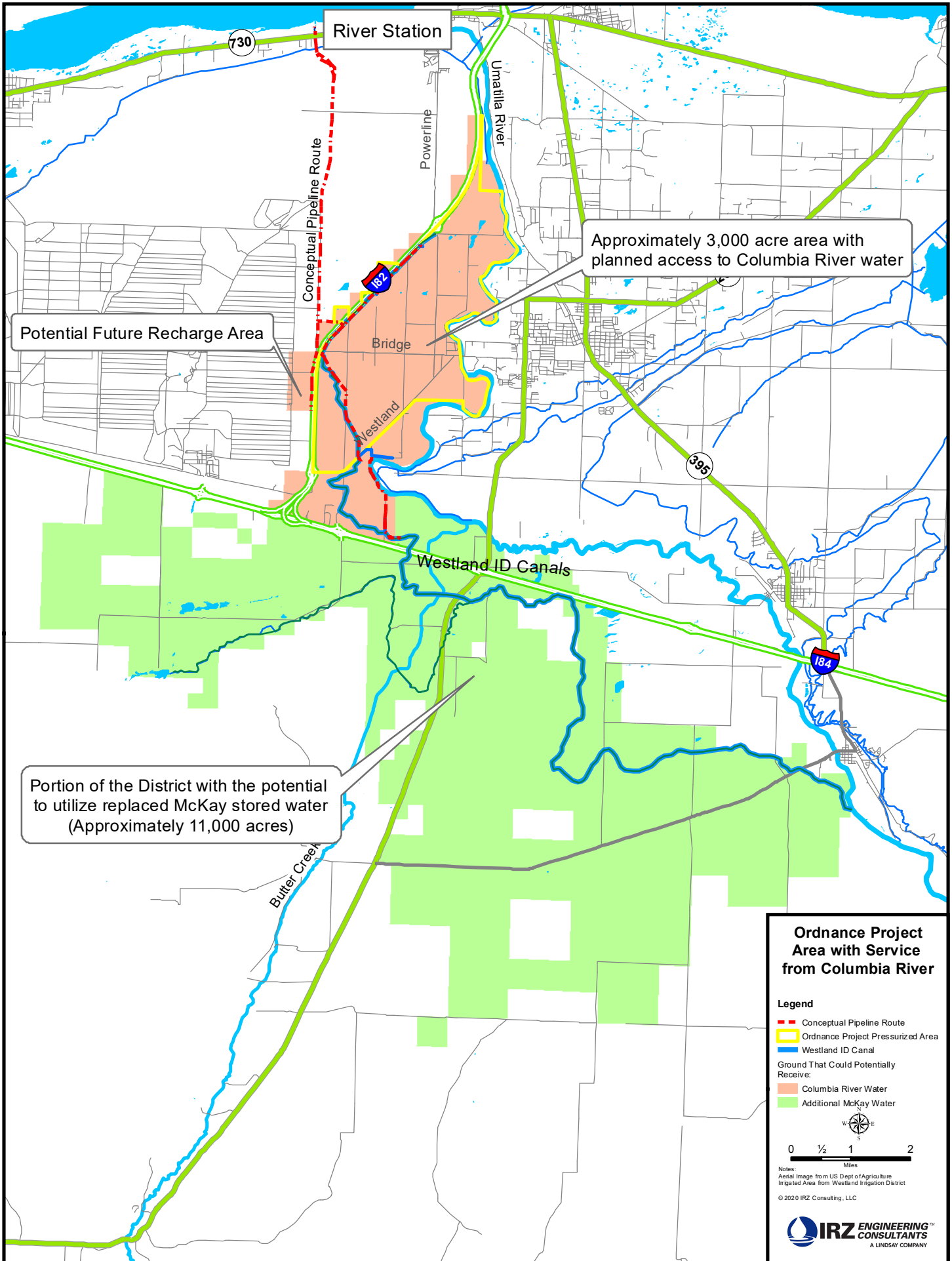
The opportunity for the project arose when the County entered into an agreement with Grimmway Farms to utilize a portion of its Columbia River intake facilities, with the stated goal of constructing a future new pipeline from there to an area near the east boundary of the former Umatilla Army Ordnance Depot. The pipeline location will allow for multiuse purposes as the former Depot and Westland Road area is developed, while also providing the ability for the District to access water for irrigation on 3,000 nearby acres it now serves.

The District's current water supplies come from early-season, snowmelt water from the Umatilla River and then later-season, stored water from McKay Reservoir, delivered to approximately 14,700 acres. Water is conveyed through 30 miles of canals and pipelines to 260+ patrons, with a majority living in the northern reach of the system on smaller acreages. When stored reservoir water is released for use, the conveyed distance increases by an additional 30 miles to reach those patrons in the district's north end, resulting in lowered delivery efficiency and increased system losses.

The Ordnance Project will utilize engineered piping to increase water delivery efficiency and reduce system losses, while pumps that match output with demand will keep power cost-effective. Total project cost is estimated at \$17 million, with a minimum of \$8.5 million coming from federal and state grants. The remaining balance will be financed through long term, low interest loans with repayment obligated to only those patrons who choose to participate in the project. It is important to note that the current allocation of water to District patrons will not decrease by implementation of this project, and the cost of water to District patrons will not increase by implementing the project. Only those patrons who choose to add to their current water supplies will incur additional charges.

The District is also working with Farmers Conservation Alliance to develop an irrigation modernization strategy to assist in evaluating how best to take advantage of this opportunity, as well as other potential improvements for increased water delivery efficiencies. The resulting System Improvement Plan will provide a blueprint for the District as it works to secure current and future water supplies for its patrons, as well as demonstrate how irrigation modernization projects provide broader environmental and community benefits.

For more information visit our website: <https://westlandirrigation.com>, or call the District office at (541) 667-2030.



River Station

730

Conceptual Pipeline Route

Powerline

Umatilla River

Approximately 3,000 acre area with planned access to Columbia River water

Potential Future Recharge Area

Bridge

Westland

395

Westland ID Canals

184

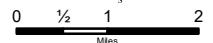
Portion of the District with the potential to utilize replaced McKay stored water (Approximately 11,000 acres)

Butter Creek

Ordnance Project Area with Service from Columbia River

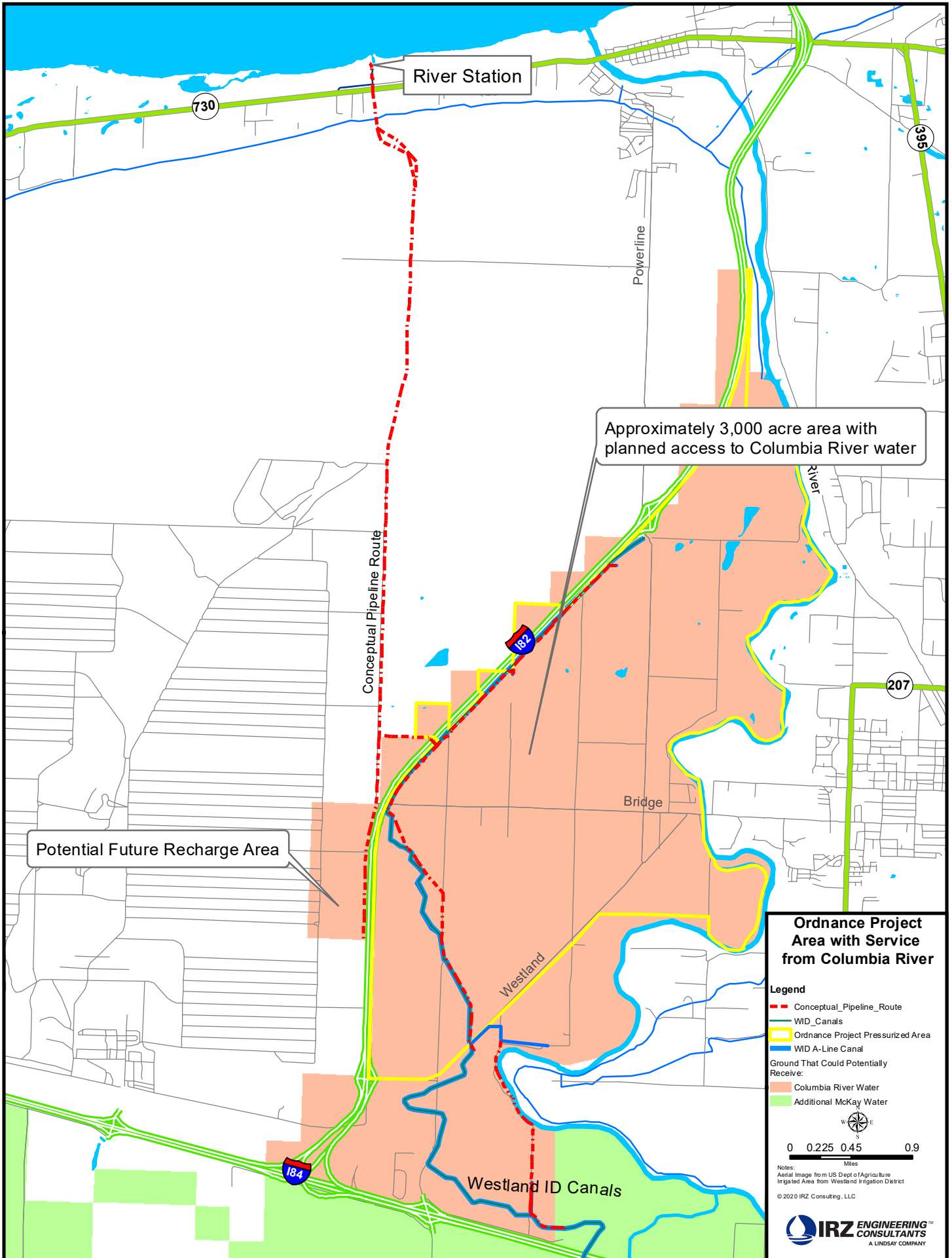
Legend

- - - Conceptual Pipeline Route
- Ordnance Project Pressurized Area
- Westland ID Canal
- Ground That Could Potentially Receive:
 - Columbia River Water
 - Additional McKay Water



Notes:
Aerial Image from US Dept of Agriculture
Irrigated Area from Westland Irrigation District
© 2020 IRZ Consulting, LLC





River Station

730

395

Powerline

Approximately 3,000 acre area with planned access to Columbia River water

Conceptual Pipeline Route

182

207

Potential Future Recharge Area

Bridge

Westland

Westland ID Canals

Ordnance Project Area with Service from Columbia River

- Legend**
- - - Conceptual_Pipeline_Route
 - WID_Canals
 - Ordnance Project Pressurized Area
 - WID A-Line Canal
- Ground That Could Potentially Receive:
- Columbia River Water
 - Additional McKay Water



Notes:
Aerial Image from US Dept of Agriculture
Irrigated Area from Westland Irrigation District
© 2020 IRZ Consulting, LLC

